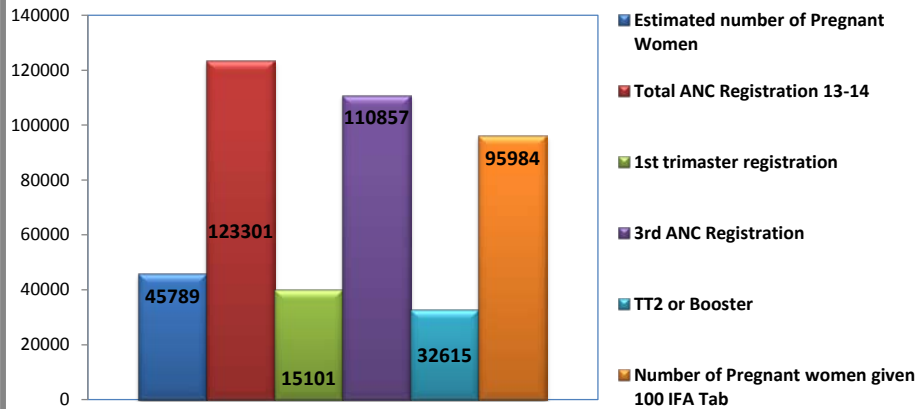


District Performance on HMIS 16 Dashboard Indicators RMNCH+A (FY. 2013-14)

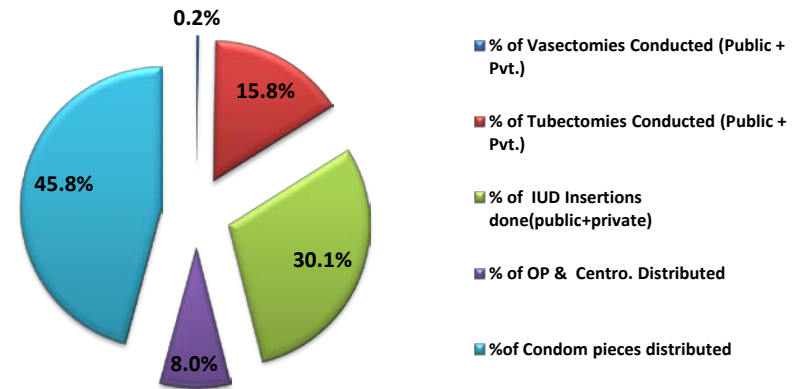
North West

North West District

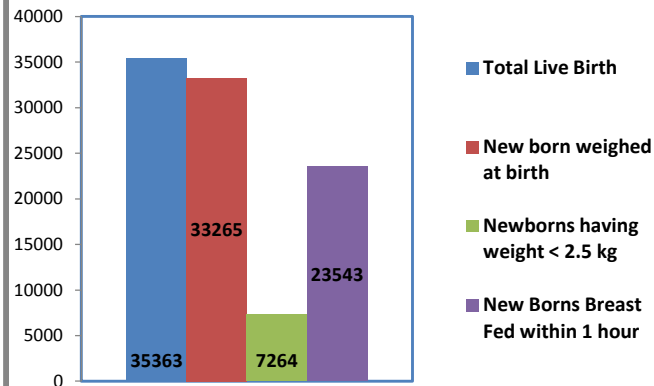
Pregnancy Care



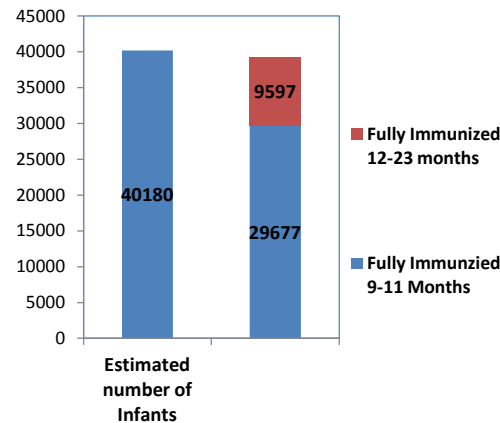
Coverage with Family Planning Methods



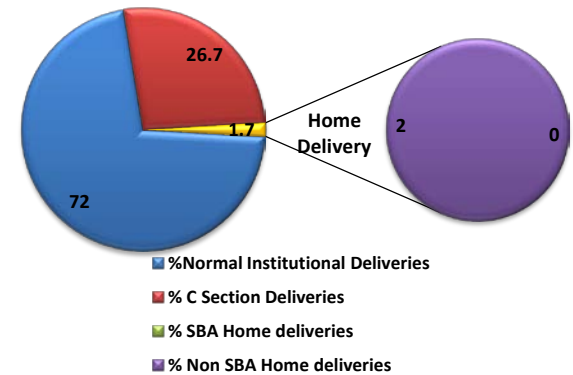
New Born



Immunization Status



Delivery Status



DISTRICT PROFILE AND FACILITY INFRASTRUCTURE

North West District

| DISTRICT PROFILE | |
|-------------------------------------|---------|
| ELA Targets | |
| Estimated Population for 2013-14 | 2289440 |
| Estimated number of Eligible Couple | 366310 |
| Estimated number of Pregnant Women | 45789 |
| Estimated Live Birth | 41210 |
| Estimated number of Infants | 40180 |

| Facility Infrastructure | | | |
|-------------------------|----|------------------|----|
| Total | | GNCTD | |
| Delhi Govt (GNCTD) | 39 | DH GNCTD | 4 |
| CGHS | 5 | SDH GNCTD | 0 |
| MCW Centres MCD | 20 | Total GNCTD PUHC | 35 |
| IPP VIII-MCD | 2 | | |
| ESI | 5 | | |
| Autonomous | 0 | | |
| Army Defence | 0 | | |
| NDMC | 0 | | |
| NDMC MCW | 0 | | |
| Railways | 0 | | |
| Private | 40 | | |
| NGO | 3 | | |